

## Depo export / editing issues in TrialDirector

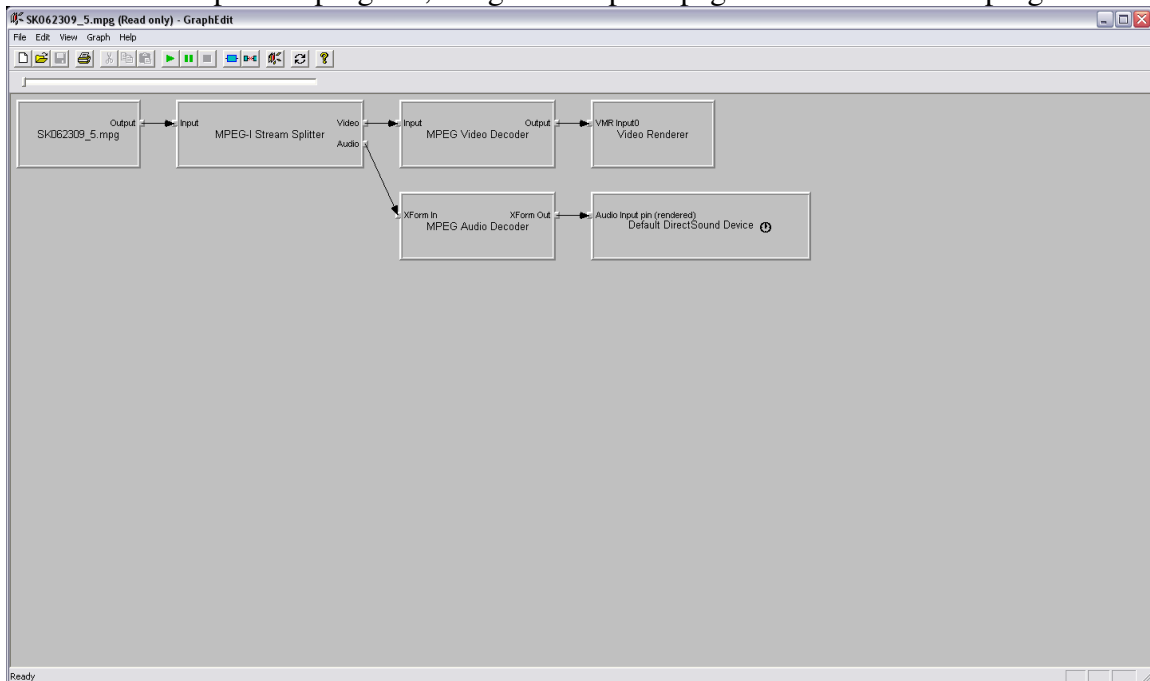
This is a tutorial on trouble shooting Depo export and editing issues in TrialDirector. These processes can also help with PowerPoint and any other mpeg 1 base video applications. TrialDirectors' depo clipping and export features are very sensitive to codec and splitter system changes. This will only concentrate on MPEG 1 video.

To be blunt, most video issues are the users own fault. The installing of various video / audio programs can wreak havoc on a PC's codes and splitters. The best advice is to keep your trial machines clean....

The first step is to work out what is going on with the video codecs and splitters. Download GraphEdit;

[http://www.digital-digest.com/dvd/downloads/showsoftware\\_graphedit\\_141.html](http://www.digital-digest.com/dvd/downloads/showsoftware_graphedit_141.html)

Once installed open the program; Drag and drop a mpeg1 video file into the program.



This is the graph we want to see for mpeg 1 video... If the graph does not look like this we have some work to do. First things first, what are we looking at in this graph?

First box represents the video file

Second box represents the video splitter

Top third box represents the video decoder

Lower third box represents the audio decoder

Top fourth box represents the video render / output device

Lower fourth box represents the audio render / output device

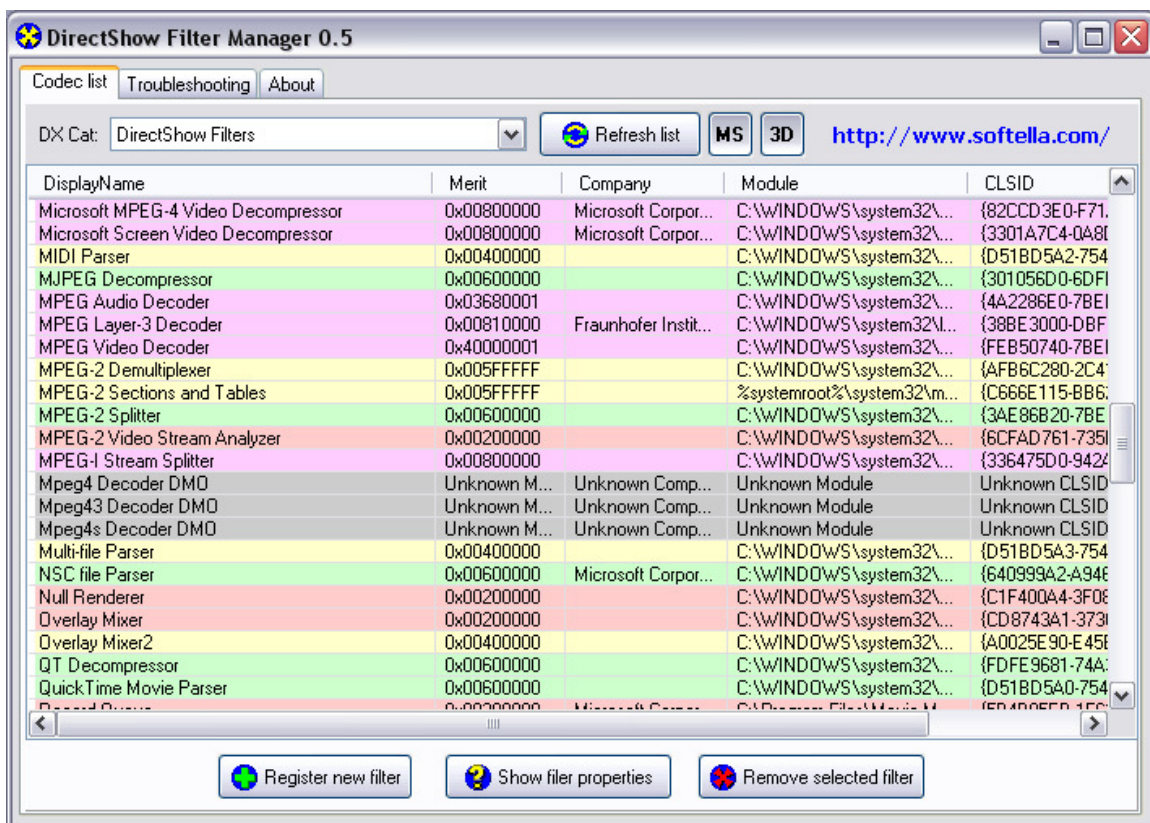
If these are not as above the system may experience issues with video playback / export / editing in PowerPoint, TD etc. I am not suggesting that the above is the only splitter / codec solution that will work, but it is the default windows settings for mpeg 1 video.

Fixing issues;

We need another program DSFMgr;

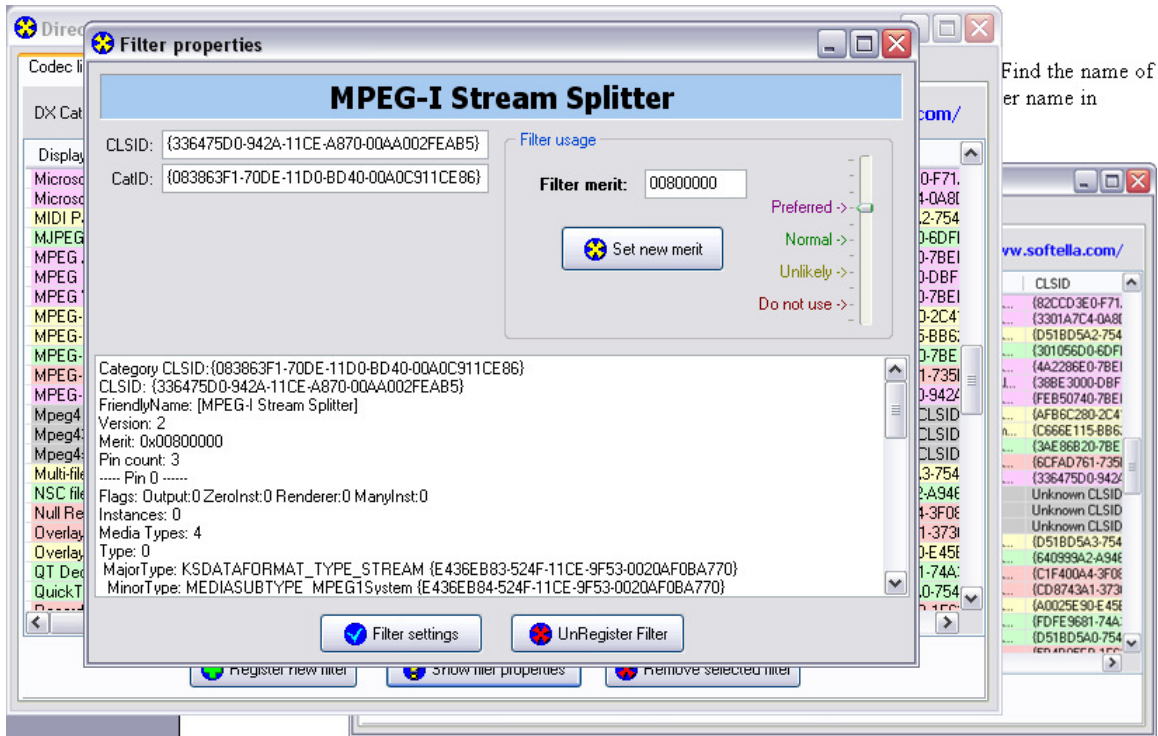
<http://www.softella.com/dsfm/index.en.htm>

This will allow us edit the priority of video / audio splitters and codecs. Find the name of the splitter in the first box, open DSFMgr. You will need to find the splitter name (Second box in GraphEdit) in DSFMgr.



My splitter is called "MPEG-1 Stream Splitter" (pink line in the middle of the above window)

Click on the splitter name, and then click on "Show Filter Properties"



Find the name of the splitter in the list of CLSIDs

As you can see in the upper right hand side, the splitters merit has been set as preferred. Lower the priority of the wrong splitter; use the slider and move it down to “Normal”.

Next, repeat the process to raise the priority on the “MPEG-1 STREAM SPLITTER” and change it to “Preferred”.

Run the tests in GraphEdit again. The next step would be to change the priority of the codec in question, the process is the same as we used for the splitter.

PLEASE NOTE; This process, if done incorrectly could break video playback on the machine.... PLEASE BACKUP EVERYTHING!!!!

This should work on both XP and Vista. Windows 7 has made changes to the direct show filters and codecs, and as far as I know, TD has not been tested by Indata for use on Windows 7. I guess we shall see what TD6 brings us.